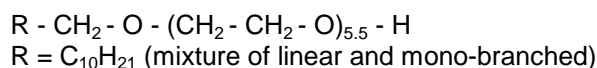


ALCHEM[®] 11-5,5

Technical Data Sheet No. 1176 – November 2010

Description

ALCHEM[®] 11-5,5 is a fatty alcohol polyethyleneglycol ether, based on ALCHEM 11-80[®] and ethylene oxide (5.5 moles). It is manufactured in our plant located in Terranova dei Passerini (Lodi, Italy). The chemical structure is the following:



CAS registry no. 34398-01-1
 EINECS no. not defined, polymer

Sales Specification

Property	Test Method	Unit	Guaranteed Value ¹
* Appearance at 25°C	visual	-	cloudy liquid
* Colour	RCM 3668	APHA	≤ 50
* Cloud point ^a	RCM 3646	°C	36-38
Hydroxyl Number	RCM 3851	mg KOH/g	132-138
* pH (5% in water)	RCM 3645	-	5.0-7.0
* Water (Karl-Fisher)	RCm 3804	% w/w	≤ 0.50
Average Molecular Mass	calculated	g/mol	407-425

* values reported on inspection certificate.

¹ specification No. D002010 rev. 1 of March 9th, 2005.

^a 1 wt % water solution.

Additional Properties

Property	Test Method	Unit	Typical Value
Ethylene Oxide content	calculated	% w/w	58
HLB	calculated	-	11.6
Density (20°C)	RCM 3663	kg/l	0.96
Viscosity (40°C)	RCM 3633	cSt	20
Flash point	RCM 3628	°C	> 125

RCM are Sasol Italy analytical methods, internal or referred to international standard. Additional information available upon request.

Main Applications

ALCHEM[®] 11-5,5 is an outstanding wetting agent, with good degreasing performance. It is highly performing for All Purpose Cleaner formulations.

Cod. 20005

ALCHEM[®] 11-5,5

Technical Data Sheet No. 1176 – November 2010

Handling And Storage

ALCHEM[®] 11-5,5 should preferably be stored in heated stainless steel tanks.

It is a cloudy liquid at room temperature and it becomes homogeneous and transparent at temperature between 28 and 32°C.

It is preferable to avoid heating above 60°C and to store under nitrogen in order to minimise yellowish phenomena. Improvement of storage stability at low temperature can be achieved by mixing ALCHEM[®] 11-5,5 with water. In particular, the addition of 15 wt% of water makes this product a transparent liquid up to a temperature under -5°C.

At room temperature ALCHEM[®] 11-5,5 is water soluble up to 50 wt%.

Shelf life is 3 years from the production date.

Safety And Biodegradability

ALCHEM[®] 11-5,5 has showed acute oral toxicity in a limit test (OECD 401); its LD₅₀ ranges between 200 and 2000 mg/kg.

ALCHEM[®] 11-5,5 is not irritant to skin (OECD 404), however it is irritant to eyes (OECD 405) and consequently prolonged or repeated contact with mucosa should be prevented.

Protective clothing, neoprene gloves and anti-splash facial mask or goggles should be worn when handling this product.

In the event of contact, contaminated clothing should be removed and the part concerned flushed with abundant water.

If the product is accidentally swallowed, vomiting should not be induced to avoid any risk of the product being inhaled. Immediate medical attention should be sought.

In the event of accidental spills, inert materials should be used to absorb the product and then the material taken up must be disposed of in accordance with regulation

ALCHEM[®] 11-5,5 is not classified as flammable substance.

This surfactant complies with the biodegradability criteria as laid down in Regulation (EC) No.648/2004 on detergents. Data to support this assertion are held at the disposal of the competent authorities of the Member States and will be made available to them, at their direct request or at the request of a detergent manufacturer.

Packaging And Transport

ALCHEM[®] 11-5,5 is generally supplied in bulk by tank trucks or tank containers. It may also be delivered in drums of 217 litres capacity or in IBC.

ALCHEM[®] 11-5,5 is not classified as hazardous substance for transport by road (ADR), by rail (RID), by air (ICAO/IATA) and by ship (IMO/IMDG).

Sasol Italy S.p.A.

Headquarters
 Viale Forlanini, 23
 20134 Milano, Italy
 Phone +39-02 58453 1
 Fax +39-02 58453 285

Technical Customer Support
 Via E. Mattei, 4
 26827 Terranova dei Passerini (LO), Italy
 Phone +39-0377 463 1
 Fax +39-0377 463 226

The information and data presented in this sheet represent our best knowledge of the products, but are not a guarantee of the performance of their derivatives, since the conditions of use are not under our direct control. Furthermore, nothing indicated herein should be considered as a guideline to the use of the product, particularly should this result in infringement of any patent right of manufacture or use ALCHEM[®] is a Sasol Italy S.p.A. trademark.