

COSMACOL ECL

Technical Data Sheet No. 5009 – July 2021

sasol



Distribuito da:

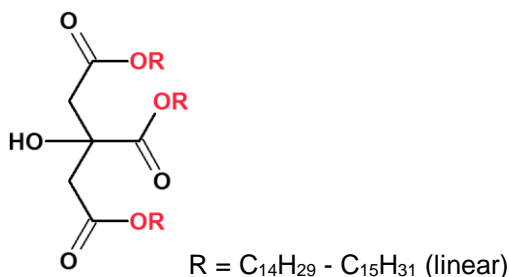


Via Bonazzi, 36
40013 Castel Maggiore (BO)
Tel: +39 051 6322111
Fax: +39 051 715380
sicurezza@tellerini.it
www.tellerini.it

Product Description

COSMACOL ECL is the citric tri-ester of ALCHEM 145 alcohols.

It is manufactured in Terranova dei Passerini (LO) plant. The chemical structure is the following:



CAS registry no. 222721-94-0
EINECS no. 825-814-0
INCI TRI C14-C15 ALKYL CITRATE

Sales Specification

Property	Test Method	Unit	Guaranteed Value ¹
√ Appearance at 20°C	Visual	-	White flakes
√ Esters purity	RCM 1201	% mass	≥ 90
√ Free Alcohol	RCM 1201	% mass	≤ 10
√ Acid number	RCM 3817	mg KOH / g	≤ 3,0
√ Free Water (Karl Fischer)	RCM 3804	% mass	≤ 0,5
√ Melting point	RCM 3637	°C	44 – 54

√ value reported on inspection certificate.

¹ specification No. 8940 rev. 1 of November 19th 2002.

Additional Properties

Property	Test Method	Unit	Typical Value
HLB required	Calculated	-	10
Iodine Number	ASTM D5768	g/100g	< 1
Melting point	ASTM D 127	°C	44 – 54
Viscosity at 70°C	ASTM D445	cSt	19
Density at 70°C	ASTM D7042 / ASTM D4052	kg/m ³	890
Flash point	ASTM D 93	°C	> 125

RCM are Sasol Italy analytical methods, internal or referred to international standard. Additional information available upon request.

**sasol**

COSMACOL ECL

Technical Data Sheet No. 5009 – July 2021

Further information

Heavy metal

Arsenic (As) less than 1 mg/kg	Cadmium (Cd) less than 1 mg/kg
Cobalt (Co) less than 1 mg/kg	Chromium (Cr) less than 1 mg/kg
Copper (Cu) less than 1 mg/kg	Iron (Fe) less than 2 mg/kg
Manganese (Mn) less than 1 mg/kg	Nickel (Ni) less than 1 mg/kg
Lead (Pb) less than 1 mg/kg	Tin (Sn) less than 1 mg/kg
Strontium (Sr) less than 1 mg/kg	Zinc (Zn) less than 1mg/kg

Heavy metal content is periodically checked (ICP method); data given here have to be considered as typical.

Preservative

COSMACOL ECL does not contain any preservative. COSMACOL ECL is not susceptible to microbial growth because of absence water content.

Property	Test Method	Unit	Typical Value
Total Aerobic Microbial Count	Eu.Ph. 5.1.4	CFU/g	< 100
Total Yeasts/Moulds Count	Eu.Ph. 5.1.4	CFU/g	< 10

Microbiological control test is periodically done; data given here have to be considered as typical.

Antioxidants

COSMACOL ECL does not contain any antioxidant.

Pesticides

COSMACOL ECL does not contain any pesticide.

Product origin

COSMACOL ECL is manufactured from following raw materials:

- Alcohols C₁₄ – C₁₅ linear with synthetic origin
- Citric acid with vegetable origin

Main Applications

COSMACOL ECL is a polar emollient with high melting point.

COSMACOL ECL improves the stability and viscosity in O/W emulsion and it reduces the stickiness in formulations.

In make-up (lipsticks and pencils) formulations COSMACOL ECL improves stability against blooming.

In skin formulations COSMACOL ECL shows mild keratolytic effect.



sasol

COSMACOL ECL

Technical Data Sheet No. 5009 – July 2021

Handling and Storage

It is suggested to keep COSMACOL ECL at temperature below 30°C, it is preferable to protect from heating and moisture sources in order to minimise hydrolysis phenomena.

COSMACOL ECL is a solid wax at room temperature it becomes a liquid at temperature higher than 45 °C.

At room temperature COSMACOL ECL is not water soluble.

Shelf-life is 36 months from production date for product in its original and sealed packaging.

Packaging

COSMACOL ECL is generally supplied in drums, details on available packaging can be obtained from sales department.

Data regarding safety, transport classes, toxicology and biodegradability of the product can be obtained from the corresponding material safety data sheet.

Sasol Italy S.p.A.

Headquarters
Viale Forlanini, 23
20134 Milano, Italy
Phone +39-02 58453 1
Fax +39-02 58453 285

Technical Customer Support
Via E. Mattei, 4
26827 Terranova dei Passerini (LO), Italy
Phone +39-0377 463 1
Fax +39-0377 463 226

Sasol is a registered trademark of Sasol Ltd. Product trademarks displayed in this document are the property of the Sasol Group of companies, except where it is clear from the context that not. Users of this document are not permitted to use these trademarks without the prior written consent of their proprietor. All rights not expressly granted are reserved. Reference to trademarks used by other companies is neither a recommendation, nor should it give the impression that products of other companies cannot be used.

The information contained in this document is based on Sasol's knowledge and experience at the time of its creation. We reserve the right to make any changes to this document or the products described therein, as a result of technological progress or developments. This information implies no liability or other legal responsibility on our part, including with regard to existing third-party patent rights. In particular, no guarantee or warranty of properties in the legal sense is implied. The customer is not exempted from the obligation to conduct careful inspection and testing of incoming products. All our business transactions are governed exclusively by our General Business Terms.